



### KEY FACTS

- Various mounting options (eg. excavator, farm loader).
- Due to low net weight, mountable to farm loaders, telehandlers or wheel loaders.
- Proper and simple connection at the headstock with ideal mounting angle.
- Protected and generously sized hydraulic piping.
- Robust and proven technology – Low-wear and low-service.
- KTL-primed (cathodic dip-coating) and powder coating. Made of high-strength Hardox® steel.

The Woodcracker® CL is also attachable to farm loaders.

The fast and agile Woodcracker® CL cutting head is a reliable companion, and not only in agricultural applications. Professional gardeners, forest managers, but also communal organisations already have the Woodcracker® CL in permanent use. Thanks to flexible and easy mounting to common vehicles, small trees and brush up to 40cm trunk diameter can be mechanically harvested with ease.

**Caution: Woodcracker® CL is not suitable for dangerous tree felling. Secure grip of cut material can not be guaranteed. In this case we recommend our Woodcracker® C- or CS series.**



# THE SWIFT AND LIGHT-WEIGHTED CUTTING HEAD



For mini excavators from 2,5t.



Fast harvest of small trees and bushes.

## TECHNICAL DATA

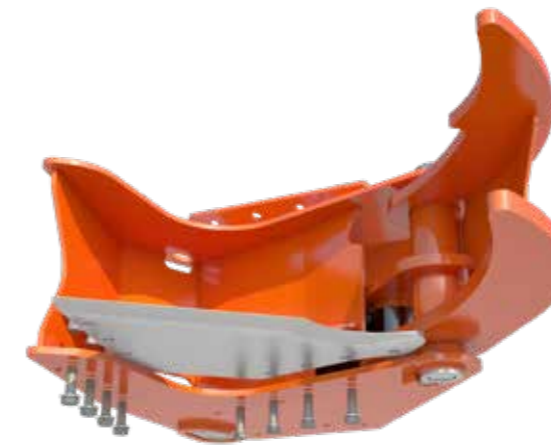


| <b>WOODCRACKER® CL</b>  | <b>CL 190</b> | <b>CL 260</b> | <b>CL 320</b> |
|---|---------------|---------------|---------------|
| Cutting diameter soft wood (mm)   | 250           | 320           | 400           |
| Cutting diameter hard wood (mm)   | 190           | 260           | 320           |
| Gripper opening = diameter of shears (mm)                               | 685           | 760           | 1060          |
| Weight (base – full equipment) (kg)                                     | 210 - 400     | 360 - 680     | 620 - 1170    |
| Recommended pump flow capacity main circuit <sup>1)</sup> (l/min.)      | 40 - 80       | 50 - 100      | 70 - 150      |
| Recommended pump flow capacity auxiliary circuit <sup>1)</sup> (l/min.) | 20 - 30       | 40 - 60       | 45 - 60       |
| Recommended operating pressure main circuit                             | 250           | 280           | 280           |
| Recommended operating pressure auxiliary circuit (bar)                  | 200           | 200           | 200           |
| Service weight of carrier vehicle <sup>2)</sup> (t)                     | 2,5 - 7,5     | 6 - 14        | 12 - 20       |
| Optional: Autospeed   | •             | •             | •             |
| Optional: Cylinder swivel unit  | • 2 x 40°     | • 2 x 48°     | • 2 x 48°     |
| Optional: Accumulator   | •             | •             | •             |

<sup>1)</sup> Depending on operating mode or equipment. <sup>2)</sup> Depending on carrier vehicle's specifications. • available - not available

## APPLICATION AREAS

- Fast harvest of small trees and bushes.
- Harvest of short rotation plantations.
- In rough terrain, hill areas and in bog areas.
- Cultivation and landscape maintenance.
- For agricultural use on a farm loader, telehandler or wheel loader.



easily replaceable blade



Optional available with accumulator.



Woodcracker® CL cuts weak wood up to 40 cm.